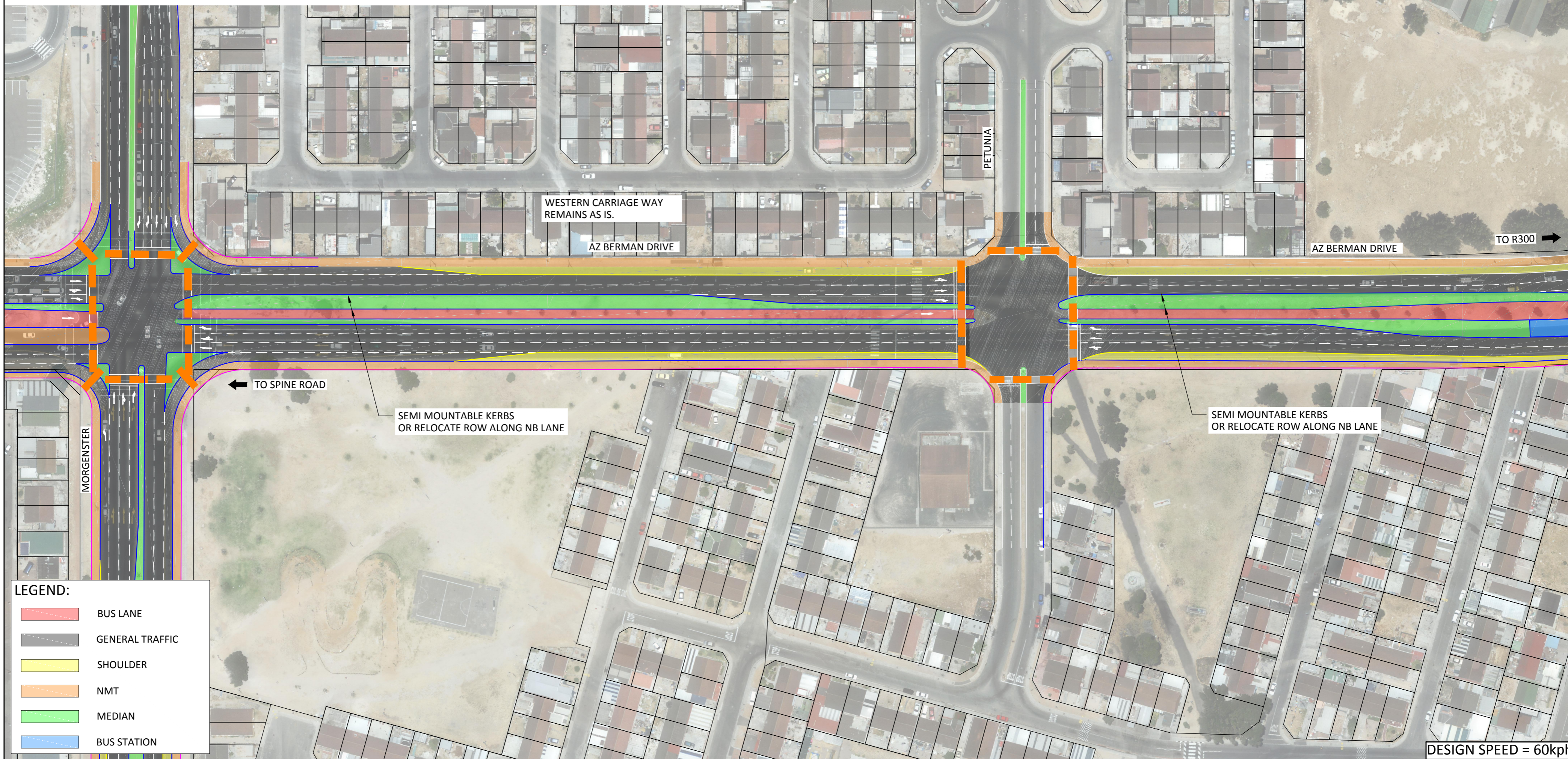


AZ BERMAN AT PETUNIA



**LEGEND:**

<span style="display:inline-block; width:15px; height:10px; background-color:red; border:1px solid black;"></span>	BUS LANE
<span style="display:inline-block; width:15px; height:10px; background-color:grey; border:1px solid black;"></span>	GENERAL TRAFFIC
<span style="display:inline-block; width:15px; height:10px; background-color:yellow; border:1px solid black;"></span>	SHOULDER
<span style="display:inline-block; width:15px; height:10px; background-color:orange; border:1px solid black;"></span>	NMT
<span style="display:inline-block; width:15px; height:10px; background-color:green; border:1px solid black;"></span>	MEDIAN
<span style="display:inline-block; width:15px; height:10px; background-color:blue; border:1px solid black;"></span>	BUS STATION

NO	DATE	DESCRIPTION	CHECK	APP.

SURVEYED	
DESIGNED	SP
DRAWN	YW
CHECKED	SP
APPROVED	CHIEF ENGINEER

**MELISSA WHITEHEAD**  
COMMISSIONER : TRANSPORT FOR CAPE TOWN

<b>DAVE. HUGO</b> DIRECTOR: INFRASTRUCTURE	<b>MADDIE MAZAZA</b> DIRECTOR: PLANNING
<b>RON HAIDEN Pr Eng.</b> MANAGER: PUBLIC TRANSPORT INFRASTRUCTURE	<b>GERSHWIN FORTUNE</b> MANAGER: SYSTEM PLANNING & MODELLING

CITY OF CAPE TOWN

**IRT: CONSTRUCTION OF PUBLIC TRANSPORT INFRASTRUCTURE FOR PHASE 2A LANSDOWNE - WETTON CORRIDOR AZ BERMAN - MORGENSTER TO PETUNIA**

SCALE 1:1000  
SHEET A2

DISCIPLINE:	CE = CIVIL ENG.   ARC = ARCHITECT   EE = ELEC. ENG
INFRA. TYPE:	ST = BUS STOP   S = STATION   D = DEPOT   B = BUSWAY
PROJ. Name	PHASE
IRT - 2A - S - CE - AZB - 3 - S - 00	
STATUS CODES :   S = SPATIAL CONCEPT   T = TENDER   C = CONSTRUCTION   A = AS-BUILT	